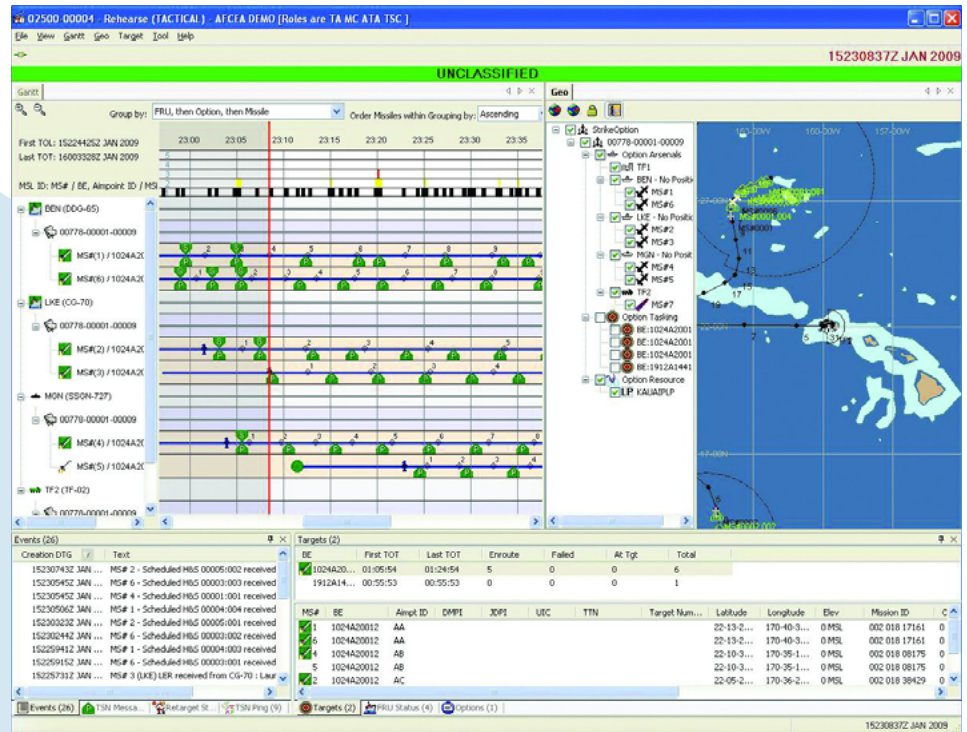


Command and control

Knowing what resources you have, where they are, and their operational status can mean the difference between success and failure



Key features and benefits:

Operationally fielded

- Every level of command
- Over 20 years of user input

Core capabilities

- Asset planning and allocation
- Execution and analysis
- Simulation and training

Operator tools

- Inventory comparison
- Organizational consolidation
- De-confliction and task integrity
- Automated component tasking

Operator friendly

- Graphical and textual displays
- User-configurable windows
- User-defined alerts
- User-configurable defaults

Background

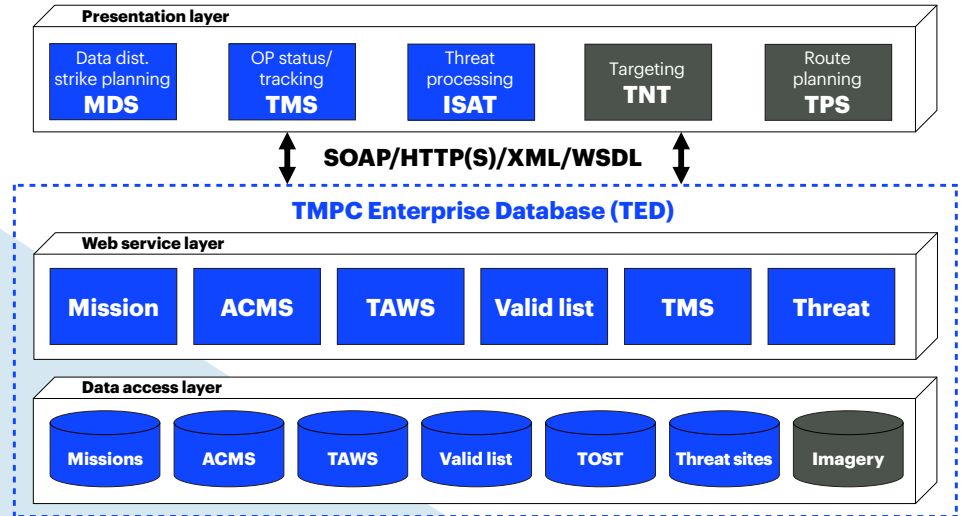
Developed and deployed as components of the United States Navy Theater Mission Planning Center (TMPC), Perspecta's Mission Distribution System (MDS), TMPC Enterprise Databases, and Tasking Management Service, provide the primary interface between the operational commander and the weapon system. These applications can easily be adapted to support command and control for other weapon systems.

Mission Distribution System (MDS)

MDS provides the tools necessary to effectively manage assets and allocate resources to achieve tactical success. MDS incorporates objective tracking, asset limitations, automated assignment algorithms based on operator-defined criteria and manual modification to ease the burden of plan development. From here, the tactical commander can use analysis tools to weigh various options and choose the best response. These plans can then be distributed in various conditions and phases (initial planning, review, feasibility, execution) to the front-line for feedback or execution, ensuring nothing is lost in the hand-off.

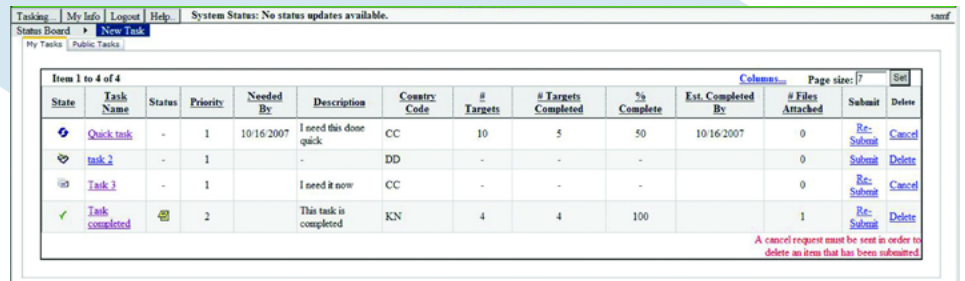
TMPC Enterprise Databases (TED)

TED is a loosely coupled set of net-centric services accessed by several user-centered applications developed across multiple programs and integrated by Perspecta. Through the use of WSDL, SOAP and XML schemas, TED provides a common data dictionary and a schema that can be used on any system that is able to access the network.



Tasking Management Service (TMS)

TMS is a web-based process management solution that allows for tracking mission production items through a multi-branch assembly line while also providing throughput metrics and work-flow analyses.



State	Task Name	Status	Priority	Needed By	Description	Constr: Code	# Targets	# Targets Completed	% Complete	Est. Completed By	# Files Attached	Submit	Delete
Quick task		-	1	10/16/2007	I need this done quick.	CC	10	5	50	10/16/2007	0	Re-Submit	Cancel
task 2		-	1		-	DD	-	-	-		0	Submit	Delete
Task 3		-	1		I need it now	CC	-	-	-		0	Re-Submit	Cancel
Task completed		✓	2		This task is completed	KN	4	4	100		1	Re-Submit	Delete

A cancel request must be sent in order to delete an item that has been submitted.

- Manages workflow and products
- Provides enterprise data management
- Supports via SIPRNet external tasking and status
- Supports distributed production